

# The I.C.M.A. Newsletter



September/October 2010

## **NACMAI Eligibility Contest**

**Competition -  
Saturday, September 25, 2010  
beginning at 8:00 a.m.\***

*\*Starting time could be adjusted, depending on number of entrants, etc.*

**Friends & Family Building - 2712 S. Main St.  
Bloomington, Illinois**

**Admission: Adult Members, \$4.00,  
children 4-10 \$1.00  
Adult Non-Members \$5.00,  
children 4-10 \$2.00**

This competition is held to determine who will represent Illinois in the various categories at Music Week 2011 in Pigeon Forge next March. See details in the ICMA Newsletter.

**For an entry form and information packet, contact the ICMA at [ICMAIllinois@aol.com](mailto:ICMAIllinois@aol.com), by phone at 309-378-4203, or by mail to ICMA, PO Box 79, Downs IL 61736-0079.**

*The Illinois Country Music Association, Inc. is a non-profit organization*

# The I.C.M.A. Newsletter

## Inside This Issue

NACMAI Eligibility Contest.....	1
Nicole Browning Organizing 2010 "Sing For Life" .....	4
ICMA Recognition Show .....	5
What Is Stage Presence Worth?.....	6
Busy Summer for ICMA Entertainers .....	10
Chapter 617 Jam Session .....	13
Pickin' Picnic In the Park .....	14
Hank Cochran Passes Away .....	16
Lorrie Morgan and Pam Tillis Show .....	16
Fisher Community Fair .....	17
Hank Thompson Bronze.....	18
Jason Gordon Opening in Branson.....	19
Pancreatic Cancer Doesn't Scare Charlie Louvin.....	20
Illini Guitar Raffle .....	24

## Regular Features

Board News .....	2
New Members .....	2
Behind the Gavel .....	3
Grass Clippings .....	9
Commercial Members .....	21
Entertainer's Directory .....	22-23
Ramblings .....	24
Application for Membership .....	25

## WANTED

Spotlight Articles ~ send us a bio and a photograph or two ~ help the rest of the membership get acquainted with you!

"Country Music Tonight" articles ~ have a jam session in your area? A country music show? Let us know and we will visit and write it up, or just send us the material and we will put it into shape for printing.

## **Board News**

We still have positions open on the board. If you are interested, contact any board member or send an e-mail to ICMAillinois@aol.com The pay is lousy but the rewards are many.

What do we do at board meetings? We meet (usually) the second Monday of each month at 6:00 p.m. for a bite to eat. The meeting starts around 7:00 p.m. and we try to hold it under two hours. We discuss recent events, and what we might do better next time, plus we arrange committees and discuss coming events. These meetings are vital to the organization, and we would like for YOU to be a part of the process!

You know the old saying "many hands make light work?" That holds true for the ICMA board also. It is hard to juggle two or three events in your head without getting them mixed up. The more board members we have, the more folks we have to put programs together.

One of the things your board is constantly discussing is how to attract our fans to our programs. We have put on many excellent shows with only a few people in the audience to enjoy them.

Any ideas?

## **New Members**

To the members who have signed up since the last newsletter, we want to take this opportunity to say "welcome," glad to have you with us, and let us know how we can serve you better. Entertainers ~ take a supply of ICMA membership forms with you whenever you perform. We can print special forms with your name preprinted so you get credit for the new members.

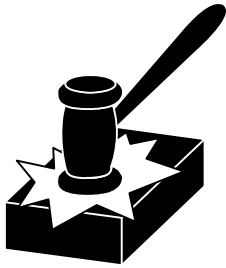
## New Members

Morgan Williams, Monmouth  
Trent Avery, Cameron  
Kenzie Ann Howell, Nokomis  
Tammara Howell, Nokomis  
Jeffrey Howell, Nokomis  
Cathy Sallenger, Chatham  
Kayla Sallenger, Chatham

## Referred by

Jodi  
and Amanda  
Mines

# Behind the Gavel



**By: President  
Ray Prince**

To: All members and Board of Directors:

Where did the summer go? I can't believe the kids are going back to school, and the weather is hopefully mellowing somewhat from the heat we have been enjoying these past few weeks.

As you know, we had to cancel the Roy Satterfeal Memorial Classic Country Showcase. We couldn't find a band willing to do the show, and there weren't very many performers signed up. Roy and Bill Grubb started this event, sponsored by Chapter 617, as more or less of a jam session with the country musicians they had worked with over the years. The American Legion in Farmer City was packed with entertainers and musicians waiting their turn. The volunteer band was so big that we overflowed the stage. The tables were filled with folks enjoying the music. The dance floor was filled. The last year Chapter 617 sponsored the event, it had slacked off some, and the chapter lost money. The board decided to take it over and see what we could do with it. Last year was fun, although not as well attended as we would have liked.

To sum up, without a live band, we would have had to use tracks, which is just not in the spirit of this event. Tracks are a great development in the music industry, but they will never replace a live band for a nostalgic show like this one.

This situation frankly has me worried. I asked for volunteer band members to serve a show or two for us during the year, and had one response. It's not fair to ask the same people to work long and hard hours for nothing time and time again. And, frankly, with the money we take in at our shows anymore, we can't afford to pay a band.

The ICMA is not alone in this dilemma; when we attended the NACMAI retreat in July, we heard the same lament from several of the other states. They have had to turn to other methods to keep their treasuries solvent. The ICMA board is discussing some alternatives, and hopefully we can come up with something that will help the members and have something left over to help with our ongoing expenses.

Look through this issue for the upcoming events. We have some interesting events the next couple of months.

Handwritten signature of Ray Prince.

**Nicole Browning Organizing 2010  
"Sing For Life"  
by Susan Browning**



*Breeann Dawson singing  
at the 2009 Event*

The 2nd Annual "Sing For Life" will be held on Sunday, October 24th in Pittsfield at the Pittsfield Senior Center at 220 West Adams Street from 4-7 pm. Area talent and ICMA members will fill the stage for the 3 hour sing.

Coordinator Nicole Browning is looking for ICMA friends to come and sing four songs that evening. Pork chops, chips, dessert and Pepsi will be served. There will be a 50/50 drawing and door prizes.

In 2009 at the first "Sing For Life", Nicole was very proud to raise

and donate \$1,034 to the Pike County Relay for Life and the American Cancer Society for cancer research. This year she is hoping to double that amount.

ICMA members who helped entertain last year were Breeann Dawson and Jenny Bennett along with Nicole. Others were scheduled but were unable to participate because of illness. The audience enjoyed Country, gospel, patriotic and even a little opry singing.

If you are available and would like to sing and help out this great cause, please contact Nicole or Susan Browning at 217-236-7025 or 217-653-2128.

### **Hank Williams Fans?**

We have been informed that Steve Maze still has around 50 of his "Hank and the Drifting Cowboys" books for sale, and 120 "Hankin' Around" books. He does not expect to reprint either one, so when they are gone, that's it! He is selling them for \$12 each, including postage and handling. Order from Steve Maze, PO Box 856, Arab, AL 35016-0856. I will probably order one of each ~ the price is right.



## **Logan County Railsplitters**

**Two Days!**

**Saturday, September 18**

**ICMA Entertaining \* Noon - 4:00 p.m.**

**ICMA Show \* 7:00 - 8:30 p.m.**

**Sunday, September 19**

**ICMA Entertaining \* Noon - 3:00 p.m.**

**Logan County Fairgrounds,  
Lincoln, Illinois**

This is our second year providing entertainment for the Railsplitters. Sound will be provided and we can accommodate live music or tracks. We will also have a few troubadours roaming the grounds doing live music.

Interested?

The roster is filling fast. To see if any time is available, contact the Project Head, Dave Nevius, 309-221-5807 or [neviusd@verizon.net](mailto:neviusd@verizon.net)

# **ICMA Recognition Show**

**October 17, 2010**  
**2:00 p.m.**

**Friends & Family Building - 2712 S. Main St.**  
**Bloomington, Illinois**

## Admission

Adults \* \$6.00 for ICMA members \* \$8.00 for non-ICMA members  
Children 6-12 \* \$2.00 for ICMA members \* \$3.00 for non-ICMA members  
Children 5 & under free

## Recognizing

**ICMA Songwriter**

**Pioneer of the Year**

**Kelly Holt Humanitarian Award**

**Fan (or Fans) of the Year**

**Other Awards**

**For your enjoyment**  
**50/50 Drawing - Concessions**  
**Great country music from your fellow ICMA members**

**We will also have the drawing for the Illini Guitar at this event!**

Commercial Tables ~ You may sell CD's or distribute your promotional material.

*The Illinois Country Music Association, Inc. is a not for profit organization*

## What is Stage Presence Worth? by Nancy Cox Borum



*Nancy is the Education Director for the Oklahoma Country Music Singers Association, and they have graciously allowed us to reprint her excellent articles for several months now. Here's some more great tips for doing your utmost.*

Research shows that approximately 50% of our communications are nonverbal. The remaining 50% is about 20% the words themselves and 30% is the vocal quality. As a singer, one would guess that the vocal quality adds another 20-30%. **This means that your stage presence is about 20-30% of the value of your entertainment.** That's a lot!

**How can you energize a crowd?** In a sense, performing and creating fans is like being a leader. Audiences like to follow. They just want to follow someone who leads and gives them something they want to follow.

**If they haven't heard you before, and you don't have any fans in the audience, you'll need to find good songs to make them feel you're really good at giving them what they're in the mood for.** *And what's good depends much on the age of the audience, their energy level at the event, the desired music genre they initially want to hear, and the energy level of the music.* So, if they're



Come see Amanda perform at Tina's CountryTime Opry in Galesburg the 2nd Friday of every **other** month and at Imo's Restaurant in Farmer City the 2nd Tuesday of each month.

Contact Jodi at 309-335-1993  
or email [amandamines@hotmail.com](mailto:amandamines@hotmail.com)

## On the Road With Rachel's Tours



### Ozark Mountain Christmas November 4-7, 2010

- 7 Shows (including Mel Tillis)
  - Veteran's Museum
- 4 meals plus 3 continental breakfasts
  - Motorcoach - Motel

For information, please call  
217-423-1888

*or write to*  
Rachel's Tours  
1132 N. Oakcrest Ave.  
Decatur, IL 62522  
(Member, I.C.M.A.)

feeling energetic, give them energetic songs. If they're mellow, sing mellow songs initially to see if they can become energized. **Are they in a partying mood?** If so, issue partying songs immediately. This leadership-followers positioning is important--you have to size up the situation and then lead accordingly.

**Leading nonverbally means be loose, confident and frequently romantic.** Talk with the audience a bit. Enjoy your interactions. Audiences are already primed to follow -- you just have to lead. If you're short or a woman, use your arms to project your image and create energy. Taller men don't have to do much but sing.

After you've persuaded them with three good songs, you'll probably get a few fans. These start the cheering. **Crowds won't do much until these initial cheerers begin.** After you get them interested in your band, you can play most anything. *Revvng up with the initial fans is important, because they are the ones that motivate the rest to set the cheering and partying mood.*

Getting crowd interaction is a very complicated matter, more complicated than singing. I think it's fair to say the most successful entertainers are actually better at this than singing, musicianship, or even song writing, so it takes time and learning.

Try it!

*ed. note: A couple of things to really make note of in this article. Note the tip "and what's good depends much on the age of the audience ..." If you have an older audience, don't sing the latest from Miranda or Taylor; sing something from an era they can identify with. Conversely, don't expect young folks to rise up and cheer for Hank and Lefty songs. Be aware of your audience.*

*Nancy mentions how shorter people can project themselves to a crowd. I have met so many singers who seem to really fill up a stage when they are performing but are actually rather diminutive when you meet them in person. Sell yourself and your talent to the people. They will respond!*

## dale c. evans



- Banjo
- Dulcimer
- Hurdy-Gurdy
- Nyckelharpa

309-828-0928  
banjodale@comcast.net

## Collection from four previous CDs now available

  
Records  
(A Brand Of Perfection Since 1970)  
Presents

**-WINNERS-**



**\$10.00 check or money order to  
B.P. Productions, PO Box 123  
Georgetown IL 61846**

As always, with BP, money back  
guarantee ~ just return and I'll refund  
your money.

Those individual albums are no longer available.  
Many requests for Winners still coming in.

**\$10.00 ~ mailing included**

**Ray Sanders**

1. *I'm Just Getting Over (Getting Over You)*
2. *Play Me A Good Country Song*
3. *The Rains Came*

**LeNaye Pearson**

4. *My Heartache Could Be Healed by You*
5. *I Walked On Sacred Ground*
6. *Broken Hearts Will Slowly Mend*

7. *My Heartache*

8. *Heavens Gate*

**Bernie Underwood**

9. *A Devil With Wings*
10. *Someone Loves You*
11. *While My Heart Was Holding You*
12. *The Greatest Man (The World Has Ever Known)*

**Bob Payne**

13. *The Man Who Stood the Test*
14. *Housewife's Dream*
15. *Native Americans*

All songs written by Bob Payne  
Published by "Banks of the Wabash" Music" (BMI)  
Phone (217) 662-2187

# PrimeTime Country

OLYMPIA HIGH SCHOOL AUDITORIUM

**SHOW TIME IS 7:00 P.M.**

**(Meal served prior to each show, beginning at 5:30 p.m.)**

**September 11**

**Terry Lynn Barton & Taylor June**

**September 25**

**Pam Harbaugh**

**October 23**

**Gracia Harrison**

**November 13**

**Rusty Cummins**

**December 11**

**Christmas Show - Family Night**



## PrimeTime Country Opry Band

- \* Janet Durham - MC & Vocals
- \* Jason Zilm - Bass Guitar & Vocals
- \* Polly Sampson - Rhythm Guitar & Vocals
- \* Danny Cunningham - Drums
- \* Al Alzman - Lead Guitar
- \* Janice Zilm - Steel Guitar & Vocals
- \* Linda Thomas - Keyboard and Vocals
- \* Anita Man - Comedian
- \* Eric Burgett - Keyboard

***Janet Durham was chosen to receive the 2009 Kelly Holt Memorial Humanitarian Award and Recording of the Year for her CD, "Counting My Blessings." Check out her web site at [www.janetdurham.com](http://www.janetdurham.com) (web site designed by Anjanel Folkens)***



**[www.primetimecountry.com](http://www.primetimecountry.com)**

**ALL shows start at 7:00 p.m.  
Doors open at 6:00 p.m.**

**Please call for info (309) 449-5484  
Sign up for our mailing list! You'll get  
lots of Great offers by mail!**

# GRASS Clippings



## What's Happening In the World of Bluegrass?

### Earl Scruggs by Chris Talbott, *The Associated Press*

It's been nearly 65 years, but Tut Taylor still vividly remembers the night Earl Scruggs changed it all.

It was Dec. 8, 1945, and Taylor was by his radio in Georgia listening to the Grand Ole Opry from the Ryman Auditorium, as usual. He was a big Bill Monroe fan and that night the Kentuckian's Blue Grass Boys featured a brand new, 21-year-old banjo player who favored the three-finger picking style. It wasn't exactly a new way to play the banjo. Others had used it and had even played the style on the radio. No one played it like Earl Scruggs, though.

Add Monroe's mandolin and Lester Flatt's guitar and it made such an impression that Taylor has no problem remembering most of the details all these decades later - though the name of that first song escapes him. "That whole Opry House just came alive and I thought it was going to explode," said Taylor, a mandolin and dobro player who has become a friend of Scruggs. "The Opry House is like a guitar box. It absorbs sounds and makes them sound better. Well, that night you could almost see the walls going in and out from the volume of hands clapping and screaming and hollering. It was maybe a lot like some of the rock 'n' roll things they had, you know. But this was a new sound, it was a pretty sound and a welcome sound."



Scruggs, now 86, commemorated the 65th anniversary of that night - considered by many to be the evening bluegrass was born - at a special performance at the Ryman.

The man whose rolling, rollicking style launched a thousand bluegrass bands hasn't played the Ryman since 2008, but said in a recent interview he loves the old building known as the "mother church." "It is special," he said of the Ryman, which hosted the Opry until 1974. "It brings back memories."

Sitting in the Ryman's balcony, Scruggs recalled the many great memories the building holds for him. The Country Music Hall of Fame member raised his arm and pointed to a pew on the main floor. "I met my wife here," he said of the late Louise Scruggs. "She was sitting right there, about the third row back, and I'd work the left side of the stage. I got to smiling at her and she smiled back. And we started dating and never quit."

Scruggs isn't sure when he first played the banjo. He was part of a musical family, though, and he never remembers a time when he wasn't trying to figure it out. "I played guitar as much as I did the banjo, but for everyday picking I'd go back to the banjo," Scruggs said. "It just fit what I wanted to hear better than what I could do with the guitar." During one practice session he was absentmindedly noodling and realized he wasn't playing in the normal way. He was using his thumb, index finger and middle finger - and it sounded pretty darn good.

"I was playing a little tune - I still play it today - called 'Reuben,'" Scruggs said. "We used to play it with a finger and a thumb and called it two-finger playing. But I had that third finger going on a roll and that excited me. That's where it started."

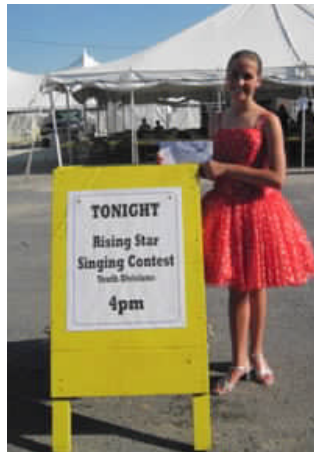
Scruggs began playing for money early on and was already well-known on regional radio shows. Monroe was looking for a banjo player to fit the new sound he was working on when he heard about Scruggs. He visited Scruggs in his hotel room and asked him to come over the Ryman where the rest of the band was. They played a group of songs together and sealed the deal for \$60 a week. The rest is history.

"It's anybody's guess what made it click," Scruggs said.

## Busy Summer for ICMA Entertainers

ICMA entertainers have been busy this summer. Here's a few tidbits we picked up from various e-mail and Facebook entries.

**Heart of Illinois Fair**  
Nicole Browning captured the top prize in the Youth Division of the Rising Star Singing Contest at the Heart of Illinois Fair taking home the \$250 cash prize for the 12 and under age division. She captured the top score in the final round singing "Til I can Make It on My Own."



The contest consisted of two age divisions for the youth 12 and under and 13 -19. (The adult division was held at a different time.) The ICMA was well represented with several making it to the final five.

Everyone sang one song and the scores were tallied with the top five singing a second song. In the 12 and under division - Amanda Mines and Nicole made the top five. In the next division - Taylor June and Morgan Williams made the top five.

### 2010 Jr. Miss of Knox County



Congratulations to Amanda Mines, ICMA member from Galesburg for winning this prestigious award. If you want to hear her on the radio, check out [http://www.facebook.com/home.php?#!/pages/Galesburg-IL/FM-95/-317843396367?ref=ts&\\_a=52&ajaxpipe=1](http://www.facebook.com/home.php?#!/pages/Galesburg-IL/FM-95/-317843396367?ref=ts&_a=52&ajaxpipe=1).

### ICMA Members Sweep the Winning spots at the IL State Fair Female Singers Talent Contest.

ICMA members took home the prizes and money at the Illinois State Fair Female Talent Contest in the Senior Division on Friday, August 13th. Gracia Harrison won 1st place and \$150, Nicole Browning placed 2nd and won \$100 and Taylor June took home 3rd place and \$50.



Gracia Harrison, Nicole Browning, Taylor June

### Terry Lynn Barton

sang the National Anthem at the American Legion State Convention in Springfield on July 16, 2010.

### Eric Burgett

performed the National Anthem before the opening round game of the WNBA Playoffs in August at the Conseco Fieldhouse in Indianapolis, Indiana. Eric's supporters were given the opportunity to purchase discounted tickets included an exclusive all you can eat and drink area, as well as 10% off discount in the Home Court Gift Shop during the game.

### Illinois State Fair

TeJai Burgdorf and Gracia Harrison sang at the Illinois State Fair at various times and stages, but I managed to lose all of the copy.

### Jenny Bennet in Branson

Jenny Bennet entertained in Branson recently, including appearing with various artists from Branson at a breakfast show held in Stonebridge Village and singing at the Caribbean theme night there as well.

There were several well-known entertainers at the breakfast, but only one person was asked for her autograph ~ Jenny!



### Virginia BBQ Talent Show

The ICMA was well represented at the Virginia BBQ Talent Show. Addie Freeman took home first place and \$250 and Nicole Browning won 2nd place and \$150.



### Mansfield Homecoming

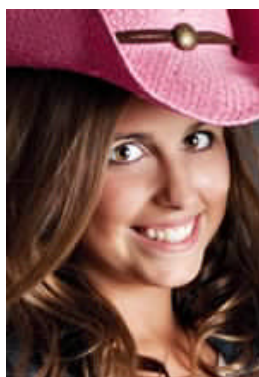
August 22, The New Blood Gospel/ Bluegrass Band, Ray Prince and a host of others helped Mansfield bring bluegrass music back to the celebration, reminiscent of the old Kentucky picnic.

### What Have You Been Doing?

We thank those of you who send us news about the musical programs and honors earned by our ICMA entertainers. That's what this newsletter is all about ~ letting the membership know what is happening around the state. Pictures are always welcome, in any form. We can scan them, steal them from Facebook, or use jpegs you send us via e-mail.

## Ali Nicole Browning

Ali Nicole Browning is 11 years old and has been singing since age 2. She has a powerful, strong voice with a fantastic range. She sings a variety of songs from Patsy Cline tunes to the hits on the radio today. Ali Nicole is available to fill your stage for 30-60 minutes.



Contact  
Susan Browning  
PO Box 293  
Perry, IL 62362  
217-236-7025 OR  
217-653-2128

sbrowning74@hotmail.com

The First Christian Church of Farmer City  
Lincoln & Market Streets, Farmer City  
Cordially Invites You To Attend

## The Cowboy Church

Every Sunday  
6:00 p.m. to 7:30 p.m.

### Featuring

**The Cowboy Church Band**  
(Kathy Brake, Mike Brake,  
Don Hurt, Ted Shaffer, Ted Long,  
Ray Prince, Marcia Shelton, Jack  
Roberts, D.J. Koester,  
Randy Grubaugh  
& Pastor Bob Beckman)



with  
Different Guests Every Week

-----  
Nondenominational

### Schedule

September 5, Band Night  
September 12, Eddy Winter  
September 19, Eric Gordon  
September 26, Terry Brown  
October 3, Bill Brooks  
October 10, 14th birthday  
October 17, Steve  
& Amanda Hargis  
October 24, Garth Golden  
October 31, Steve Bounds  
November 7, Norman  
& Donna Mathias



*Branson Style Entertainment Comes To Central Illinois!*

# **Bellflower**

---

## **Country Opry**

*Saturday, September 25, 2010: Wear Something Pink*

### **"Grand Ladies of Country Music" Show**

*Breast Cancer Awareness Show*

*Show Starts at 7:00 p.m.*

*Doors Open at 6:00 p.m.*

---

*Saturday, October 23, 2010: Wear a Costume*

### **"Halloween Show"**

*Show Starts at 7:00 p.m.*

*Doors Open at 6:00 p.m.*

---

TICKETS: Adults: \$10

Kids under 12: free

<http://www.bellflowercountryopry.com>

*Illinois Country Music Association, Inc.  
Chapter 617*

# **Jam Session**

**Sunday, September 26, 2010**

**New  
Location**

**El Paso VFW  
El Paso, Illinois  
12:00 p.m. til ???**

**No Charge**

**Potluck Dinner**

**Bring Covered dishes to share!!  
Coffee, Tea and Table Service will be provided.**

**There will be:**

**\* Open Mic      \* 50/50 Drawing**

**For information, call William Grubb,  
309-564-0228 or 309-824-6404**

**All **players, singers and listeners**  
are welcome to attend this jam session.**

**You do not have to be a member of either the  
ICMA or Chapter 617.**

*The Illinois Country Music Association, Inc. is a nonprofit organization*

# Pickin' Picnic in the Park

The Pickin' Picnic used to be an annual event, with a lot of folks to pick and a bunch to munch and listen. After a flop a couple years ago, we were afraid to schedule another event, but we decided to give it another try this year. Della and I kind of put it together ~ it didn't cost much money and those in attendance had a good time.

Those singing and/or playing included Roger Harrison, Bill Boolman, Ashley Mehl, Donnie Hurt, Janice Nevius, Elise Marie, Charlie Helmick, Sarah Helmick, Ron Gregory and Mel Gilmore. Bailey Prince was our designated photographer for the day.



*Entertaining at their first ICMA event were Sarah and father Charlie Helmick*



*L, Bill Boolman*

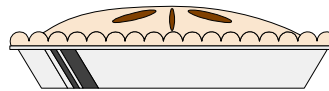


*Ray Prince, Ashley Mehl*



*Above, Roger Harrison and Janice Nevius  
Below, Della and Bailey Prince*

*Thanks to those who brought food ~ we were certainly well fed!*



*Above, Mel Gilmore on banjo  
Left, The Maries, with Donnie Hurt on bass*

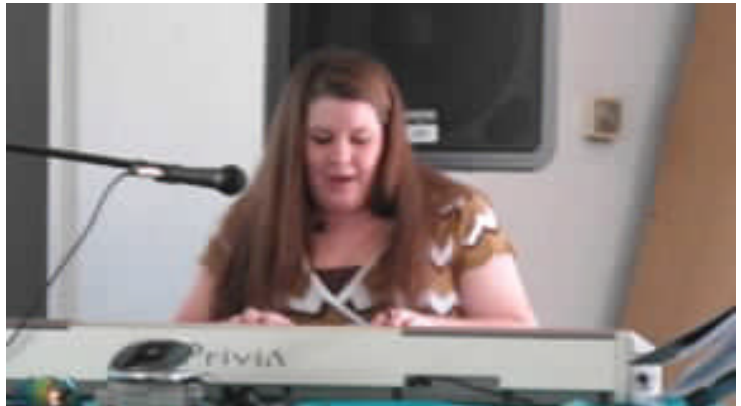




*Ashley Mehl plays guitar and sings, backed by Mel Gilmore and Roger Harrison*



*Janice Nevius sang harmony for Ron Gregory*



*Elise Marie played and sang for the crowd.*



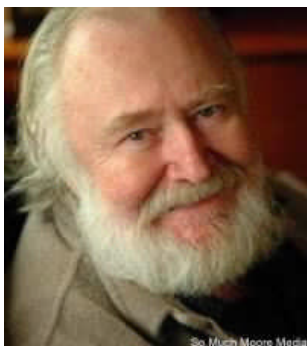
*Donnie Hurt*



***We heard a couple of folks say "We need to do this kind of thing more often." I heartily agree ~ a laid back fun place for members to gather and learn from each other.***



## Songwriting Legend Hank Cochran Passes Away



Last night, Jamey Johnson, Billy Ray Cyrus and Buddy Cannon dropped by to sing songs with Hank, and this morning (July 16) the legendary songwriter was surrounded by family and friends when he passed away at his Hendersonville, Tennessee home from a

long illness. A private, family memorial will be held in the near future, and a public service will follow. Details will be forthcoming.

The family asks that you respect their privacy at this time and, in lieu of flowers, request those wishing to honor Hank make donations to the Nashville Songwriters Hall of Fame Foundation.

Hank was inducted in to the Nashville Songwriters Association International Hall of Fame by unanimous vote in 1974, and was

honored by B.M.I. in June 2009 for his six-decade long career of hits, that includes country classics: "I Fall To Pieces," "Make The World Go Away," "Ocean Front Property," "The Chair" and "Don't You Ever Get Tired Of Hurting Me."

Hank is survived by his wife Suzi, daughter Booth Calder and three sons- Garland Perry Cochran Jr., James Lee Cochran and Daniel Cochran.

## Lorrie Morgan and Pam Tillis Show by Tammy Schenke



*Chris Krause with two of his fans, Lorrie Morgan and Pam Tillis*

The Lorrie Morgan and Pam Tillis show held at Lumiere Place Casino in St. Louis on Friday, July 23rd was fantastic! Wish it had been a little longer but we had such a good time. We got to go back stage and meet both of them. Here is a picture of Chris with them. He looks a little too happy, don'tcha think?



## Colleen Wild Band

Please Look up [www.myspace.com/ColleenWild](http://www.myspace.com/ColleenWild) to view information, and listen to original music.

Colleen Wild has been in the entertainment industry for over 10 years. She has fronted several bands, and has been an opening act for some major acts such as; Brad Paisley, in Princeton, IL., Tanya Tucker in Taylorville, IL, Royce Elliot, in Peoria, IL, John Corbett, in Joliet, IL. She has been on Tour in Tennessee, Illinois, and Missouri. Colleen has won many awards, and has been an accomplished singer songwriter, recording artist in Nashville, TN. The Colleen Wild Band has done many Charity Events, Fund raisers, Festivals, and Fairs all over Illinois. Colleen was a featured performer for Joliet's local Comcast Entertainment Segment, and on Nashville's Cable Network.

They are currently booking for the Fall and Winter of 2010.  
This Band can Entertain Any event Small or Large!

The Band is available for any size venue Please contact Colleen at 815-600-0347. or Pamela at 815-546-3131 you can also e-mail the band at [c.a.wildband@comcast.net](mailto:c.a.wildband@comcast.net), or Colleen at [cwildentry@comcast.net](mailto:cwildentry@comcast.net)

Thank You, Sincerely,

Colleen Wild/Entertainer ~ Pam Scahill / Promoter for Colleen Wild Band

# 69th Annual Fisher Community Fair and Horse Show

We tried everything we knew to attract a crowd to the ICMA Country Showcase at the Fisher Fair on July 9, but the gathering was rather small. However, those in attendance were enthusiastic and really enjoyed the program.

Chris Durham provided and ran the sound equipment, and entertainers included Janet Durham, Polly Sampson, Anjanel Folkens, Janice Nevius and Laura Laughery. Ray Prince did the MC job and sang a couple of numbers. Bailey Prince took care of the tip box and handing out flyers and other material.



*Janice Nevius*



*Laura Laughery*



*Anjanel Folkens*



*ICMA Pioneer  
Polly Sampson*



*Ray Prince*



*Chris Durham*



*Janet Durham*

**Thanks to John Coombs for the photos.**



*Duos, Trios, Quartets, we had them all.*

*Below, Bailey Prince guarded the tip box*



## **Hank Thompson Bronze To Be Placed At Heart of Texas Country Music Museum** *by Tracy Pitcox, Heart of Texas Country*

Ann Thompson, the widow of Country Music Hall of Famer Hank Thompson, has commissioned Deep In The Heart Foundry in Bastrop, Texas, to create a larger than life size bronze of the Country Music Icon. Upon its completion, the \$40,000.00 bronze will be placed at the Heart of Texas Country Music Museum in Brady, Texas.

The idea for a life size bronze of the Country Music great began before Thompson passed away. He and his wife Ann had discussed the idea on several occasions and Thompson was even measured for the bronze. Those measurements became very valuable once the bronze was commissioned.

The bronze will depict Thompson performing on stage with his guitar while gently leaning back on a stool. He will be in full stage clothing with his hat, Tony Alamo "Hank" jacket, boots and guitar strap while singing into a microphone. The bronze will be about 10% larger than life and will be placed on a bronze floor created to look like the wood from an old stage. There will also be a short biography of Thompson on the bottom with his logo created into the bronze as well.

"We have some incredible artists that work with us at the foundry," Clint Howard, owner of Deep In The Heart Foundry, said. "When Mrs. Thompson approached me about creating a bronze honoring her late husband, I really wanted to create the image myself. I have spent literally hundreds of hours researching Hank and watching his videos and listening to his music. I believe that we have captured the essence of this Country Music legend and I am looking forward to the final steps in completing the project."

The bronze will be unveiled on Saturday, March 19, 2011, at the Heart of Texas Country Music Museum. Special political dignitaries will be in attendance along with many of those artists that Thompson influenced. There will be a ceremony and then a reception at the museum in conjunction with the 22nd Anniversary Celebration of the Heart of Texas Country Music Association.

Thompson was an entertainer whose career spanned seven decades. He sold more than 60 million records worldwide. Thompson's musical

style, characterized as honky tonk Western swing, was a mixture of fiddles, electric guitar and steel guitar that featured his distinctive, smooth baritone vocals.

His backing band, The Brazos Valley Boys, was voted the top Country Western Band for 14 years in a row by *Billboard*. *Thompson was elected to the Country Music Hall of Fame in 1989 and was inducted into the Nashville Songwriters Hall of Fame in 1997. He passed away on November 6, 2007.*

"When Ann told me that she and Hank wanted to bronze at the Heart of Texas Country Music Museum, I can not tell you how honored we were," Heart of Texas Records President and Museum Coordinator Tracy Pitcox said. "Hank Thompson was truly one of the biggest Country Music entertainers in the history of our music. He left a huge legacy and we will be extremely proud to help carry on that legacy for future generations to know and honor Hank's contributions to Country Music." In conjunction with the unveiling, the museum will also open up an expanded Hank Thompson display including pieces from the Brazos Valley Boys.

Before his passing in 2007, Thompson asked that memorials be sent to the Heart of Texas Country Music Museum. Over \$10,000.00 was received from fans and entertainers including Vince Gill, George Jones, Darrell McCall, Merle Haggard, Leona Williams, Amy Grant, Ferlin Husky, Frankie Miller, Johnny Moore and the Ernest Tubb Record Shop Corporation among others.

**For further information**  
**[www.heartoftexascountry.com](http://www.heartoftexascountry.com)**  
**(325) 597-1895**

## *Jerry Lynn Barton*



Country & Gospel  
Singer

Available for Oprys,  
Weddings and other  
venues

Contact Russ at  
309-531-7499

## Jason Gordon ~ Bringing Country Back To Branson by Nancy Gordon

Hi, Ray & Della and ICMA Friends,

Here is a "teaser" card about Jay's (ICMA's own Jason Gordon) debut show at Top Hits MoTown Downtown Theater in Branson. Jay was hired at his first audition because the owners loved his voice. He has been working toward the 15th opening date for about six weeks now. Lots of rehearsing. He has done a few shows leading up to this and wherever he goes he gets a standing ovation. Branson is ready for more country and Jay will lead the way!

Country music is what made Branson to begin with ~ now you can hardly find any among the circus acts, Japanese fire shows, dog tricks, etc.

The pictures of the two on the card are horrible, but they both sing good (but not together.)

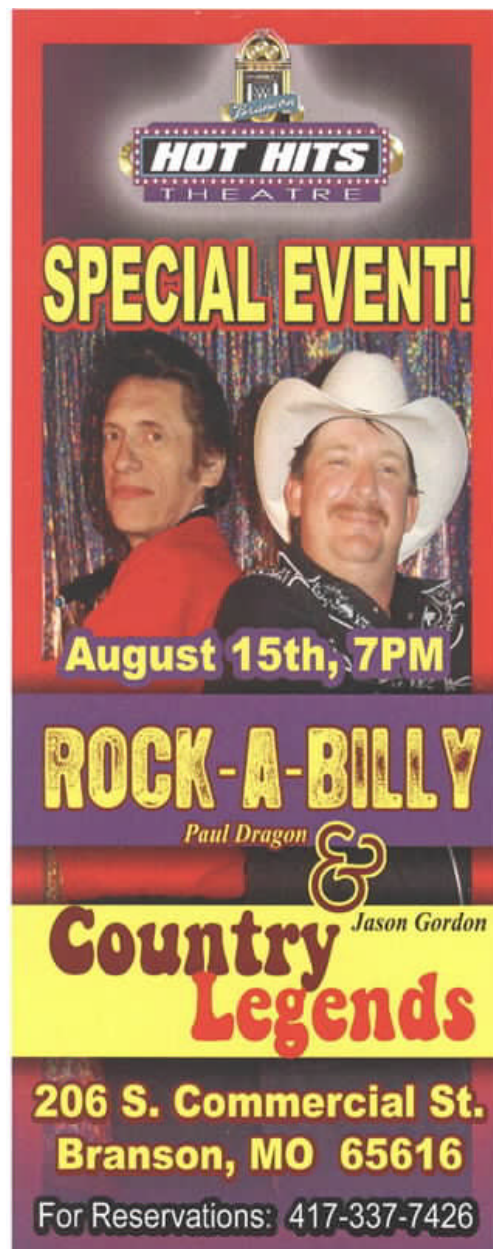
They are calling Jason their lead act. He will be singing six days a week, maybe more than one show a day. His boss, Rico Vegas, is a former MoTown entertainer. He also has a huge antique store next to the theater that he will auction the contents.

Jay has also been appearing on Branson Live Radio. He's a good talker too.

Its getting fun down here, but way too hot!

If you visit Branson, give us a call - 309-838-0810.

*Your musical friend,  
Nancy G.*



*"Jason's voice is a powerful mix of George Jones, Vern Gosdin and Alan Jackson!"*

*Jason Brumley,  
Nashville promoter and producer*

*ed note: Better throw in a little John Conlee; Jason can do John good enough to fool Mrs. Conlee!*

*Jason has been "flirting with stardom" here in Illinois for a long time, and we are sincerely happy that he is finding an outlet for his talents. Jason, best wishes, and the ICMA is cheering you on!!!*

## Pancreatic Cancer Doesn't Scare Charlie Louvin



*Charlie Louvin, left, with Kris Kristofferson*

Charlie Louvin can remember a time when a diagnosis of pancreatic cancer — or any cancer, really — was a sure death sentence.

The 83-year-old Country Music Hall of Famer said his recent diagnosis was upsetting at first, but he has hopes modern medicine

will help him beat cancer — or at least push it off for a while. "They can do wonders," Louvin said this week. "And what I need sorely is a miracle, and I believe they're still around. There's miracles that happen in this country every day and I'm wide open for one."

Louvin seems as vital as ever. He has two albums set for release over the next few months, a healthy schedule of live shows booked and an optimist's sense of the future. "Charlie's old school," said Brett Steele, his manager. "The show must go on. He fought me tooth and nail to postpone all these dates he had in July and August."

Louvin acknowledges momentary dismay, though, when he first found out he might have cancer. He said his blood pressure was too high despite medication and his doctor wanted to conduct tests to find out why. As Louvin said in a phone interview from his home in Wartrace, Tenn., "He figured some of my plumbing had blew up."

An MRI showed a shadow on Louvin's pancreas, the gland that produces key hormones and digestive enzymes. With his family gathered around him at the hospital, the doctor said Louvin had just six months to live. "I guarantee that rattled my cage," Louvin said. The next day Louvin visited cancer specialists at Vanderbilt University. They confirmed the diagnosis with a needle biopsy, but told Louvin the prognosis was not as grim as he'd been led to believe. He'll undergo a special operation July 22.

Doctors told him even "if they don't get it all they

still give me five years, and ... I left there on cloud nine," Louvin said.

He's been warned that he'll be in the hospital for six days after the surgery and could be laid up for 30. But he's so confident in his recuperative abilities that he wants to hit the road in late August again, though Steele prevailed and his next planned show isn't until Sept. 12 in Bowling Green, Ohio.

Louvin remains in demand. He first became popular in the 1950s as part of the Louvin Brothers duo with his brother, Ira. The two specialized in harmony and revolutionized the way singers in all genres sing together with their close harmonies. Their music has remained timeless, and though Louvin's career suffered the same ups and downs that any performer working in his sixth decade might expect, he's never really been out of demand.

## Ray Prince



**Old Time**  
Country, Gospel,  
Soft Rock, Irish  
Folk Songs,  
Bluegrass

Specializing in  
Nursing Homes,  
Senior's Meetings  
and Retirement  
Centers

Solo or band (Prairie Ramblers) available  
309-378-4203 or swampvrnm@aol.com

Every Sunday (as schedule permits) Cowboy  
Church, Farmer City, IL, 6:00 p.m.

Every Tuesday evening, 6:30 p.m., (as  
schedule permits) Bon-Aire Jammers, Imo's  
Family Restaurant, Farmer City, IL.

Every 3rd Wednesday, ASTA HealthCare,  
Bloomington, Illinois, with Prairie Ramblers

Every 4th Wednesday, Heritage Manor,  
Bloomington, Illinois, with Prairie Ramblers

Other Wednesdays, through September, Village  
Market, Downs, 4-6 p.m.

## **Commercial Members Illinois Country Music Association, Inc.**

Our commercial members are on the rolls because they are interested in country music and country music people. Let them know we appreciate their support.

We want to encourage our commercial members to submit a story letting the members know who you are. The deadline for the next issue is October 1, 2010.

**Fraternal Order of Eagles,  
Champaign, IL**

**Bill Robinson & Friends,  
St. Charles, IL**

**WBWN - B104 FM, Bloomington, IL**

**B. P. Records and Production  
& Banks of the Wabash Publishing,  
Georgetown, IL**

**Bement Country Opry, Inc.,  
Bement, IL**

**Imo's Farmer City Cafe,  
Farmer City, IL**

**PrimeTime Country Opry,  
Hopedale IL**

**Cowboy Church Band,  
Farmer City, IL**

**Watkins Jewelry, Clinton, IL**

**Marvin Lee Band,  
St. Joseph, IL**

**Iroquois County Country Line  
Dancers**

**Village of McLean, McLean, IL**

**Russonic Recording Studio  
Mattoon, IL**

**Studio 401 Recording  
Georgetown, IL**

**That's Country (D.J. & Pat)  
Homer Glen, IL**

**Bellflower Country Opry  
Bellflower, IL**

**The Templeton Family  
Lostant, IL**

Est. 1890



600 West Side Square  
Clinton, IL 61727  
217-935-4583

**WATCH - CLOCK  
- JEWELRY,  
SALES AND REPAIR**

## Entertainer's Directory

Any member in good standing of the Illinois Country Music Association, Inc., is entitled to free listing in the Entertainer's Directory. If more information, photo and/or show information is needed, it will be necessary to purchase an ad. (See scale at "Ramblings," in this issue.) To be listed in the Directory, just e-mail ICMAIllinois@aol.com or call (309) 378-4203.

**David Alan** info@davidalancountry.com

**Trent Avery & Buckshot** myspace.com/thebuckshotband2009 trent\_avery@yahoo.com

**Terry Lynn Barton** Contact Russ at 309-531-7499 rtbhome@comcast.net

**Bellflower Country Opry** http://www.bellflowercountryopr7.com

**Bement Country Opry** (217) 877-6499 info@bementcountryopry.com, www.bementcountryopry.com

**Jason Benefield** www.jasonbenefield.com

**Jenny Bennet** Deanna Bennet (309) 392-2108 bnet90@verizon.net

**Bluegrass Festivals** (217) 243-3159 info@bluegrassmidwest.com www.bluegrassmidwest.com

**Heather Bradford** Roger or Leslie Bradford (217) 249-2562 or (217) 249-2608

brdfrd87@yahoo.com www.heatherbradford.com

**Bill Brooks** www.billbrooksmusic.com

**Ali Nicole Browning** (217) 653-2128 sbrowning74@hotmail.com

**Eric Burgett** eburgettmusic@yahoo.com

**Jordan Carter** (618) 755-0155 injdist@yahoo.com www.myspace.com/jordancarter86

**Clementine Cowboy Church** Dennis Farmer (217) 638-2045

**D.J. Pat & Company** D. J. Seneker (708) 301-3734

**Janet Durham** jedurham@mchsi.com

**Danny Everhart Band** Mona Wilcoxon & Assoc. (309) 639-2787

**Farmer City Cowboy Church** Evelyn Henry (309) 928-2333

**Ray Fidler** (309) 785-5117 rayfidler@msn.com

**Mark & Pam Fisher** www.markandpamfisher.com mark@markandpamfisher.com

**Anjanel Folkens** (309) 310-5588 anjanel.folkens@frontiernet.net www.anjanel.net

**Stephanie Foster** (309) 370-7232 stephaniefostermusic@gmail.com www.stephaniefostermusic.com

**Addie Freeman** contact Lynn Freeman (217) 833-2066 or (217) 247-0411 g-pchick@hotmail.com

**Eric Gordon** (309) 826-8710 redbandana@yahoo.com www.ericgordonmusic.com

**Jason Gordon**, 309-392-2625

**Gospel Opry** Lonnie Emmert (309) 963-4929

**Gospel Voyagers** Dennis & Tracy Farmer (217) 891-6479 prairiecountry2@aol.com

**Danielle Grimm** Pamela Scahill (815) 546-3131 Pamelas\_3angels@yahoo.com

**Gym Bob's Jamboree Show** Mike Porter www.Gymbobs.com Mikeporteronline@msn.com

(618) 665-3956

**Happy Heart Entertainment** Betty Giacobazzi (309) 648-8648 Chris Hawkins (309) 699-8968

**Gracia Harrison** (217)801-5312 graciariamusic@gmail.com www.myspace.com/graciariamusic

**Mariah Henderson** Dave Henderson (217) 454-9592 Julie Henderson (217) 412-7956

**Naomi Hills & Spirit Road** (217) 382-4263 naomi@lmymailstation.com

**Eva Hunter** www.evahunter.com

**Imo's Family Restaurant, Farmer City** Emo Balazi (309) 928-2926

**Taylor June** 254-855-4376 dexterafl@yahoo.com

**Chris Krause** Tammy Schenke (618) 452-0820 www.christopherkrause.com

**Jackie Lawson** Freeze Entertainment (217) 232-6969 www.jackielawsonmusic.com  
**Marvin Lee's Country Opry** (217) 694-4177  
**Dena Lewis** (309) 453-9361 buckhorn.cowgirl@gmail.com  
**Elise Marie** (641) 236-4730 or (641) 821-0033 gstrecc@mchsi.com www.elisemariemusic.com  
**Ashley Mehl** (309) 379-5131 dmmehl@mtco.com  
**Justine Milligan** Julie Milligan Justine94@yahoo.com  
**Amanda Mines** Jodi Mines (309) 335-1993 amandamines@hotmail.com  
**Panther Creek Duo** Mike Porter/Marsha Banning www.MikePorter.com www.Gymbobs.com  
**Travis Parks** Gary Raye Productions (309) 694-2726 elvis@garyraye.com ~ www.garyraye.com  
**Postville Opry** 3rd Saturday, Mt. Hope/Funk's Grove Community Hall, McLean  
**PrimeTime Country** (309) 449-5484 www.primetimecountry.com/  
**Ray Prince** (309) 378-4203 swampvrnm@aol.com  
**Phyllis Proctor** pp6233@aol.com  
**Gary Raye** elvis@garyraye.com www.garyraye.com  
**Derrick Roy** (217) 649-1186  
**Vanessa Annalyse Scahill** Pamela Scahill (815) 546-3131 Pamelas\_3angels@yahoo.com  
**Paul Summers Ministry** (217) 589-4918 psks6470@verizon.net www.summersministry.com  
**TeJai** (309) 627-2277 tejaicountrymusic@live.com www.tejaicountrymusic.webs.com  
**Tina's Country Opry** 2nd Friday each month, OAK's Senior Center, 176 N. Farnham, Galesburg  
**Missy Vail** Connie Vail (309) 334-2697 cone@winco.net www.missyvail.com  
**Colleen Wild** Pamela Scahill (815) 546-3131 Pamelas\_3angels@yahoo.com  
**Susan Williams** 815-549-6419 www.susanwilliamsmusic.com susanwilliams01@hotmail.com

---

## Entertainers Ads

Why not give folks a better idea of who you are and what you do, with a low cost entertainer's ad, showing your photo and contact information? It only costs \$15.00 for three issues.

If you want to include your upcoming shows, consider a larger ad, which will be billed at the same rate as regular advertising (see Ramblings for current prices).

We will ask the entertainers to pay for these ads, in advance, for three issues. Since they will now be paid ads, prices for your events may be listed. If the size of your ad fluctuates, we will ask you to pay for the largest size of ad you will be

running in the three issue period.

Below is a typical "entertainer's ad" which you can run for three issues for only \$15.00.

<p> <b>Taylor Jane Doe</b>            (217) 555-1212             visit my web site at  <a href="http://www.taylorjanedoe.com">www.taylorjanedoe.com</a>            e-mail <a href="mailto:taylor@taylordoe.com">taylor@taylordoe.com</a> </p>	
---	---



## Epiphone Les Paul Collegiate Series Electric Guitar

We are offering a chance to own a piece of Illini History. You can take a chance on winning this beauty for **\$10.00 per ticket, or three for \$25.00.**

Drawing to be held October 17, 2010 *(Note date change)*  
(ICMA Member Recognition Program)

Tickets available at area Oprys, or direct from either Ray Prince, [ICMAIllinois@aol.com](mailto:ICMAIllinois@aol.com), or Dave Nevius, [neviusd@verizon.net](mailto:neviusd@verizon.net)

*Includes gig bag, strap and cord*



From the estate of Larry Brown. It was Larry's desire to sell this guitar and donate the proceeds to the ICMA. His widow, Joyce, is honoring his wish. Larry had a lifelong commitment to country music, especially gospel music in his later years.



# Ramblings

Newsletter Editor

*The Illinois Country Music Association, Inc.,  
is a non-profit organization.*

## Pictures In the Newsletter

We can use color photos, black and white, CD's, digital camera memory cards, almost anything you can name can be used. *If you want your photos returned, please include a self-addressed stamped envelope.*

## Newsletter Schedule

Our bimonthly Newsletter is scheduled to go out around the first of January, March, May, July, September and November. The *deadline* for submitting material is the *first of the month preceding* the scheduled mailing, i.e..

Jan/Feb issue.....	deadline December 1st
Mar/Apr issue .....	deadline February 1st
May/June issue .....	deadline April 1st
July/Aug issue.....	deadline June 1st
Sep/Oct issue.....	deadline August 1st
Nov/Dec issue .....	deadline October 1st

## Advertising Rates

### ICMA Members

#### (10% discount for commercial members)

1/8 Page.....	\$15 for 3 issues
	\$6 for one issue
1/4 Page.....	\$24 for 3 issues
	\$11for one issue
1/2 Page.....	\$53 for 3 issues
	\$20for one issue
Full Page.....	\$90 for 3 issues
	\$40 for one issue

### Non-ICMA Members

1/8 Page.....	\$45 for 3 issues
	\$18 for one issue
1/4 Page.....	\$81 for 3 issues
	\$32 for one issue
1/2 Page.....	\$158 for 3 issues
	\$59 for one issue
Full Page.....	\$270 for 3 issues
	\$90 for one issue

**Web Site ~ [www.ILcountrymusic.com](http://www.ILcountrymusic.com)**

**Webmaster ~ Anjanel Folkens**

### NACMAI Member

The Illinois Country Music Association, Inc. is a proud member of NACMAI, North America Country Music Associations, International.

*"Keep Country Country"*



## Newsletter Committee: Ray Prince, Anjanel Folkens Proof Reader: Della Prince

Published by the Illinois Country Music Association, Inc. Articles and news items may be submitted to the I.C.M.A. Newsletter in typed or printed form for publication, or submitted on a CD in Text format or sent via e-mail. We reserve the right to refuse to print submissions based upon our editorial policies and judgments. We cannot be responsible for the loss or non-return of unsolicited photos or manuscripts, but those sending a self-addressed stamped envelope will normally be returned.

Mail to: I.C.M.A. Newsletter  
P.O. Box 79  
Downs, IL 61736-0079

e-mail to: ICMA Illinois@aol.com

The I.C.M.A. Newsletter is published periodically by the Illinois Country Music Association, Inc. It is distributed exclusively to members of the organization, and to others by the Board of Directors for promotion of the organization.

## I.C.M.A. Board of Directors

**Terms expiring April, 2011:** Della Prince, Anjanel Folkens, Donna Nevius, Chris Durham, Glen Dawson, Lori Dawson

**Terms expiring April, 2012:** Ray Prince, Dave Nevius, Bonnie Hill, Janice Nevius, Joyce Brown, Deb Mehl

### Board of Directors

Ray Prince, President .....	309-378-4203
Dave Nevius, Vice President .....	309-212-5807
Della Prince, Treasurer .....	309-378-4203
Anjanel Folkens, Recording Secretary	309-963-6490
Donna Nevius .....	309-212-5807
Bonnie Hill .....	309-475-6301
Chris Durham .....	309-449-5484
Janice Nevius .....	309-826-5300
Glen Dawson .....	309-454-8068
Lori Dawson .....	309-454-8068
Joyce Brown .....	217-384-9036
Deb Mehl .....	309-379-5131

## Application for Membership

### Join Illinois' Most Affordable "Country Club"!

Join us today and become an active member of the I.C.M.A. When you join, you receive, as just one of your benefits, the I.C.M.A. Newsletter, the official publication of the I.C.M.A. We will keep you informed of upcoming events, awards shows and special offers only available to I.C.M.A. members.

**"General Members"** will receive a membership card, issues of the I.C.M.A. Newsletter, ballots for awards, ballots for Board of Directors voting and special notices and offers throughout the year.

**"Family Members"** (persons residing at the same address) will also receive a membership card, ballots and special offers. Only the sponsoring General Member will receive the Newsletter.

**"Commercial Members"** will receive a special plaque and recognition for their business, band or organization designating it as a supporter of the I.C.M.A. Commercial members will not receive any ballots, but will receive all Newsletters and publications of the I.C.M.A.

- Yes, I want to join as a GENERAL MEMBER.** Enclose \$12.50 for each General Membership. (For a two year membership, enclose \$20.00.)
- Yes, I want to join as a FAMILY MEMBER.** Enclose \$7.50 for each *additional* Family Membership. (For a two year membership, enclose \$11.25.)
- Yes, I want to join as a COMMERCIAL MEMBER.** Enclose \$30.00 for each Commercial Membership.

**\*NOTE: We need your e-mail address for newsletter distribution. If you do not have access to the Internet, leave this space blank.**

**PLEASE PRINT IN INK**

General Member Name \_\_\_\_\_  Check if Under Age 18

\*E-Mail Address (for newsletter) \_\_\_\_\_ Phone \_\_\_\_\_

Family Member 1 \_\_\_\_\_  Check if Under Age 18

Family Member 2 \_\_\_\_\_  Check if Under Age 18

Address: \_\_\_\_\_

City \_\_\_\_\_ State \_\_\_\_\_ ZIP \_\_\_\_\_

Were you referred by another ICMA member? (name) \_\_\_\_\_

### Moving??? New Address? Please Let Us Know!!!

Name: \_\_\_\_\_

New Address: \_\_\_\_\_

City/State/ZIP \_\_\_\_\_

E-Mail Address \_\_\_\_\_

(for newsletter and "What's Happening")  
Mail to ICMA, PO Box 79, Downs, IL 61736-0079